

PORT OF COLUMBIA COUNTY



LOCATION: 51 miles along Columbia River

CITIES: Scappoose, St. Helens, Columbia City, Rainier, and Clatskanie

Revenues:

Commercial Rent
Terminal Services
Marina
RV Park

Operating Budget

FY '24:
\$10.9 million
(Personnel, Capital, and Debt)

Top Port Industries By Jobs:

Aviation Manufacturing



Light Manufacturing



Transloading



Energy



Competitive Advantages: The Port of Columbia County owns 8 different industrial sites and 2,400 acres, including properties with excellent highway, rail, airport, and river access.

Port Economic Impact



Direct Jobs

480



Jobs Supported
by Business
Spending

533

Jobs Supported
by
Employee
Spending

416



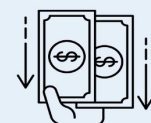
Total Jobs

1,429

Total
Payroll
\$30.3 M

Total
Income
\$90.2 M

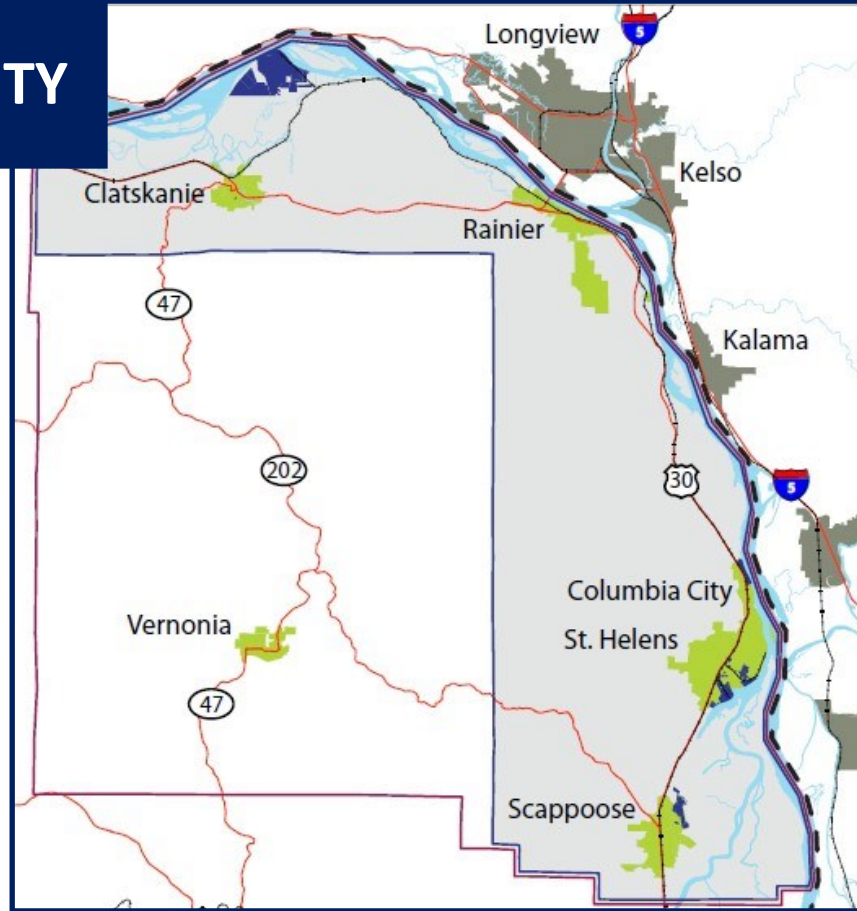
Average Port Wage
\$63,134



www.PortofColumbiaCounty.org

PORT OF COLUMBIA COUNTY

About the Port: The Port was formed in 1940 to pursue economic development and offers a variety of sites for industrial lease and development in its 2,400-acre portfolio. The Port has a self-scouring, deep-water dock at Port Westward on the Columbia River with rail access. In addition to its industrial properties, the Port owns and manages Scappoose Airport and the Scappoose Bay Marina recreational facility.



Port of Columbia County District Boundary

McNulty Creek Industrial Park:

37-acre industrial site is certified “shovel-ready” by the State of Oregon. Located in a business-friendly city of St. Helens and the South Columbia County Enterprise Zone, 20 minutes from the Portland metro. Zoned "Heavy Industrial," the site is rail adjacent with all utilities.



Priority Projects:

- ◆ Port Westward Beaver Dock resilience and lay berth improvements
- ◆ Brownfield cleanup at Railroad Avenue
- ◆ Industrial spec buildings at McNulty Way in St. Helens
- ◆ Scappoose Bay Marina Improvement Project to increase capacity, safety, and ADA access



Sources: Oregon Employment Department Quarterly Census of Employment & Wages 2021 by businesses located on port property. IMPLAN modeling used to calculate jobs supported by business (indirect) and employee spending (induced) impacts, Port budgets (LB1s) & strategic plans.