

COLUMBIA CITY INDUSTRIAL PARK



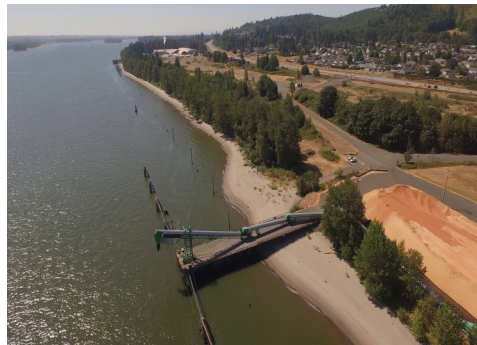
FOR LEASE

**62420 U.S. HWY. 30
COLUMBIA CITY, OR**

35 ACRES

SPECIFICATIONS

- 35 subdividable acres located between U.S. Hwy. 30 and the Columbia River
- 32 miles to Portland, OR
- Zoned: Light Industrial
- Dock access to the Columbia River
- Utilities: power, natural gas, water, sewer, and telecom
- Buildings (priced separately from land): 2,000 sq. ft. office space; 1,000 sq. ft. shop, 620 sq. ft. garage
- Rail served by Portland & Western Railroad connecting with BNSF
- Current tenants include Clearwater Paper and Forest Energy Oregon
- South Columbia County Enterprise Zone
- Bond financing may be available



LEARN MORE

Amy Bynum

(971) 261-7090

bynum@portofcolumbiacounty.org

www.portofcolumbiacounty.org